

Lucilla

# Ultrajoy

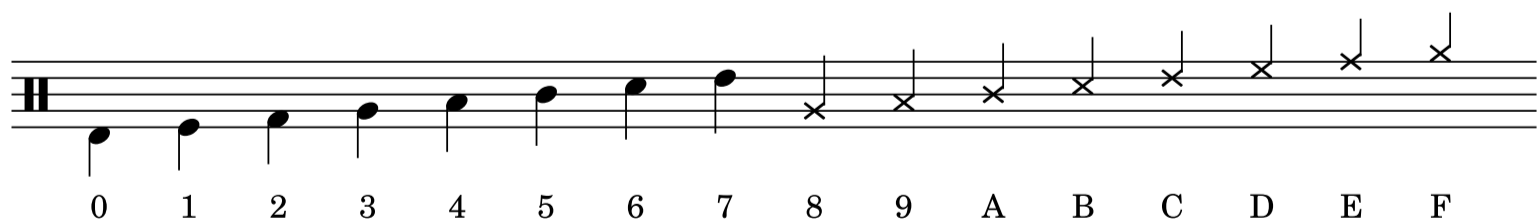
Full Score

## Score Notes:

This piece is in 31edo (31 notes per octave) and is notated using ups and downs notation. Perfect fifths denote their nearest 31edo equivalent (18 steps), and every other interval is derived as a combination of octaves and perfect fifths:

- A major second is  $18 + 18 - 31 = 5$  steps.
- A minor second is  $18 - 5 - 5 - 5 = 3$  steps.
- An augmented unison (sharp or flat) is  $5 - 3 = 2$  steps.
- A diminished second is  $3 - 2 = 1$  step.
- Since sharps and flats are worth 2 steps, half-sharps and half-flats are worth 1 step.

The 'noise' channel can play 16 different noise samples, numbered with hex digits 0–9–A–F, and is notated according to the following scheme:



# Ultrajoy

in 3/4

Lucilla

♩ = 160; ♪ =  $\overset{\frown}{\text{3}}$

Pulse Solo

Pulse

Triangle

Sawtooth

Noise

P

T

N

P

T

S

N

9 Em7 Am7  $\frac{1}{2}$  G/B Ch7

P

S

N

12 G Bm C B Am7

P

S

N

15 As7 Dh7/A G Bm7 Em7

P

T

S

N

18 C G/B Ah7

P

T

S

N

20 G B C Bm

P

T

S

N

22 C A<sup>+</sup>m7 D<sup>+</sup>

P

1/4

1/2

T

S

N

24 G<sup>+</sup> A<sup>+</sup>m7 G<sup>+</sup>/B<sup>+</sup> E<sup>+</sup>m7

P

1/4

f

staccato

1/2

T

S

N

26  $E^{\flat}M7$   $F^{\sharp}7$   $D^{\sharp}$   $D^{\sharp}h7$   $D^{\sharp}dim$

28  $E^{\sharp}m7$   $G^{\sharp}/B^{\sharp}$   $C^{\sharp}$   $G^{\sharp}$

30  $E^{\sharp}m$   $G^{\sharp}/D^{\sharp}$   $E^{\flat}M7$

32 **G** **Em7** **C**

P **1/8** **1/2** *mp*

S *mf*

N

35 **D** **G** **1/2**

P *mf* **1/2**

T

S

N

37 **Em7** **C**

P

T

S **3**

N **3**



46 Am7 A<sup>+</sup>m7 D<sup>+</sup>

P 1/4 1/2

T

S

N

48 G<sup>+</sup> A<sup>+</sup>m7 G<sup>+</sup>/B<sup>+</sup> E<sup>+</sup>m7

P 1/4 *f* 1/2

T

S

N

50 C<sup>+</sup>m F<sup>+</sup> A<sup>+</sup>m D<sup>+</sup> D<sup>+</sup>dim

P 1/4

T

S

N



52 *E<sup>♯</sup>m7* *G<sup>♯</sup>/B<sup>♯</sup>* *C<sup>♯</sup>* *G<sup>♯</sup>*

P

T

S

N

1/8

3

54 *E<sup>♯</sup>m* *G<sup>♯</sup>/D<sup>♯</sup>* *E<sup>♯</sup>M7*

P

T

S

N

1/2

1/2

*f*

3

3

3

56 *3/8* *G* *Em7*

Solo

P

T

S

N

1/2

*mp*

*f*

3

3

3



64

Solo

*p*

*staccato*

P

$G^b$   $\frac{1}{8}$

*p*

$E^b m$

S

$\frac{1}{2}$

N

66

Solo

P

$A^b m$

S

N

67

Solo

P

$D^b$   $\frac{1}{4}$

*mf*

$C^{\#} h 7$

$A^{\#} m$

$D^{\#}$

*mf*

$\frac{1}{4}$

S

N

68

Solo

P

G#sm7 A#5 G#/B# C#

1/4 1/2

mp

S

N

70

Solo

P

D# E#m Eb Fm

1/8 1/2

3

S

N

71

Solo

P

Bbm7 A#m9 A+m11 D#13

1/4

S

N

sfz

this is how you modulate to G half-sharp major, Jacob

72  $G^{\sharp}$   $A^{\sharp}m7$   $G^{\sharp}/B^{\sharp}$   $E^{\sharp}m7$

1/4  $f$  3

P 1/2

T 1/2

S

N

74  $C^{\sharp}m$   $F^{\sharp}$   $A^{\sharp}m$   $D^{\sharp}$   $D^{\sharp}dim$

4 2 3 1/4

P 4 2 3 1/4

T 4 2 3

S

N 4 3 2 3 3

76  $E^{\sharp}m7$   $G^{\sharp}/B^{\sharp}$   $C^{\sharp}$   $G^{\sharp}$

1/8 3

P 1/8

T

S

N 3

78  $E^{\sharp}m$   $G^{\sharp}/D^{\sharp}$   $E^{\flat}M7$   $D^{\sharp}$

P  $\frac{1}{2}$

B  $\frac{1}{2}$

T

S

N

80  $G^{\sharp}$   $A^{\sharp}m7$   $G^{\sharp}/B^{\sharp}$   $E^{\sharp}m7$

P  $\frac{1}{4}$  *f*

B  $\frac{1}{2}$

T

S

N

82  $E^{\flat}M7$   $F^{\sharp}7$   $D^{\sharp}$   $D^{\sharp}h7$   $D^{\sharp}dim$

P  $\frac{1}{4}$

B

T

S

N

84

*E<sup>b</sup>m7* *G<sup>#</sup>/B<sup>#</sup>* *C<sup>#</sup>* *G<sup>#</sup>*

P

*1/8*

T

S

N

> (static noise)

86

*E<sup>b</sup>m* *G<sup>#</sup>/D<sup>#</sup>* *E<sup>b</sup>M7*

P

*1/2*

T

S

N

*ff*

88

*G*

*rall.*

*8va*

*a tempo*

P

*1/4*

*1/4*

*pp*

T

S